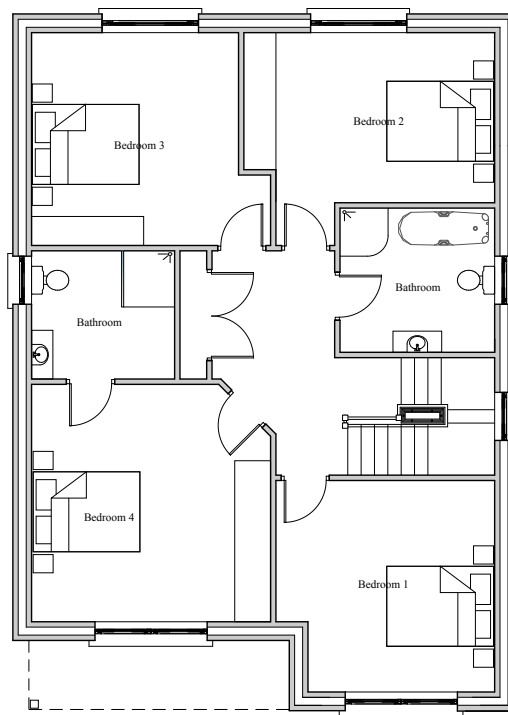
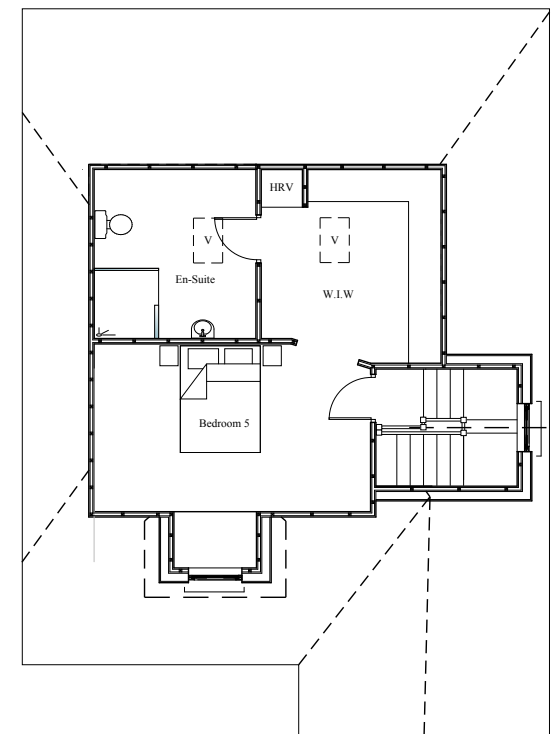


Ground Floor Plan
101.56m² / 1,093 sq.ft.



First Floor Plan
100.69m² / 1,083 sq.ft.



Second Floor Plan
44.46m² / 478 sq.ft.



Front Elevation



Rear Elevation

Ardilea – 5 bedroom house
Floor area: 246.71m² / 2,654 sq.ft.

Kitchen/Dining Room	8.70x 5.50m
Living Room	3.60 x 5.20m
Hall	1.40 X 5.20m
Lounge	3.50 X 3.95m
Bedroom 1	4.10 x 3.95m
Bedroom 2	4.70 x 3.20m
Bedroom 3	3.90 x 4.00m
Bedroom 4	4.50 x 4.40m
Bedroom 4 Ensuite	2.70 x 2.40m
Bathroom	2.90 x 2.70m
Bedroom 5	5.00 x 3.00m
Bedroom 5 Ensuite	2.90 x 2.40m
Bed 5 Walk in robe	3.30 x 3.00m

20-26 Ardilea

PRACTICE MEMBER
RIA.I. **PBA** architects
 R.I.A.I. 98013
 Stoneford, Kilkenny.
 Email: bannonarchitecture@gmail.com
 facebook: P B A architects
 Ph: 00353 87 6196527
 R.I.A.I. registered practice

